

Vlastnosti funkcí

Properties of real functions

Robert Mařík
Mendel University Brno

12. května 2005



[Home Page](#)

[Print](#)

[Title Page](#)




Page **1** of **58**


[Go Back](#)

[Full Screen](#)


[Close](#)


[Quit](#)

 Odpovězte na následující otázky. Klikněte do čtverečku u odpovědi. Zelená fajka značí správnou a červený křížek špatnou odpověď (vyzkoušejte si to níže).

 Answer the following questions. Click the correct answer. Green checkmark indicates correct answer and the red cross indicates incorrect answer (try on this page bellow).

Quiz

1.  Správná odpověď na tuto otázku je **NE**


 The correct answer to this question is **NO**


Ano, tvrzení platí.

Ne, tvrzení neplatí.

Yes, it's true.

No, it's not true.

2.  Správná odpověď na tuto otázku je **ANO**

 The correct answer to this question is **YES**

Ano, tvrzení platí.

Ne, tvrzení neplatí.

Yes, it's true.

No, it's not true.



[Home Page](#)

[Print](#)

[Title Page](#)



Page 2 of 58

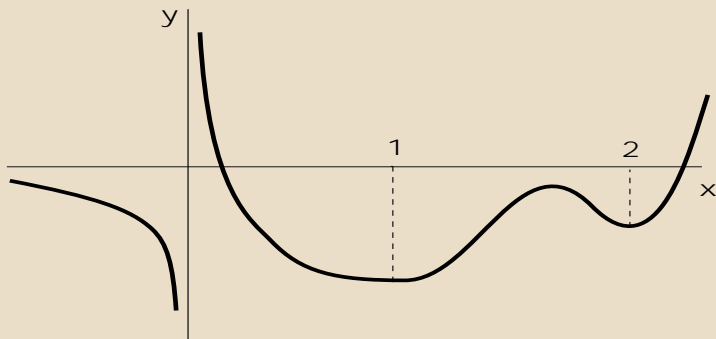
[Go Back](#)

[Full Screen](#)

[Close](#)


[Quit](#)

Quiz



1.

 Funkce je definovaná na \mathbb{R} .

 The function is defined on \mathbb{R} .

Ano, tvrzení platí.
Yes, it's true.

Ne, tvrzení neplatí.
No, it's not true.

[Prev. Page](#)

[Next Page](#)



[Home Page](#)

[Print](#)

[Title Page](#)



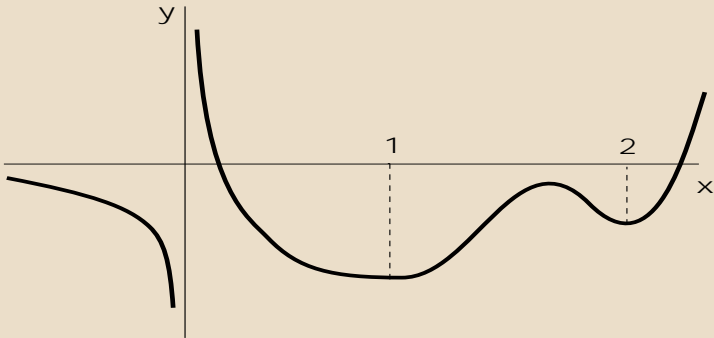
Page 3 of 58

[Go Back](#)

[Full Screen](#)

[Close](#)

[Quit](#)



2.

🇨🇪 Funkce $f(x)$ v bodě $x = 0$ není definovaná, je zde ale spojitá.

🇬🇧 The function $f(x)$ is undefined and continuous at $x = 0$.

Ano, tvrzení platí.
Yes, it's true.

Ne, tvrzení neplatí.
No, it's not true.

Prev. Page

Next Page

Home Page

Print

Title Page

⏪ ⏩

◀ ▶

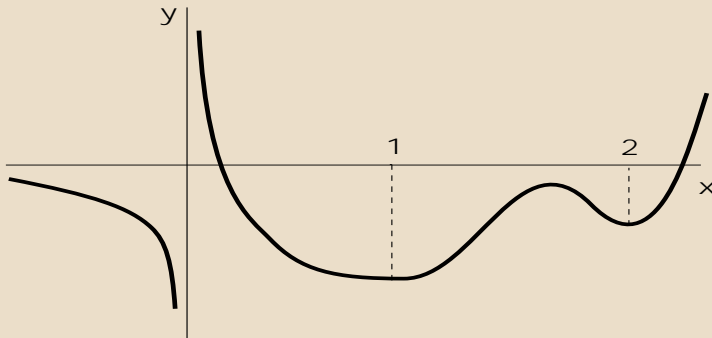
Page 4 of 58

Go Back

Full Screen


Close

Quit



3.

 Funkce má v bodě 0 bod nespojitosti.

 The point $x = 0$ is a point of discontinuity of the function.

Ano, tvrzení platí.
Yes, it's true.

Ne, tvrzení neplatí.
No, it's not true.

[Prev. Page](#)

[Next Page](#)

[Home Page](#)

[Print](#)

[Title Page](#)



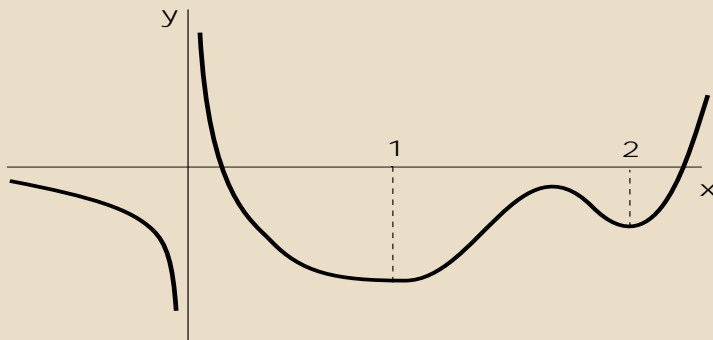
Page 5 of 58

[Go Back](#)


[Full Screen](#)


[Close](#)

[Quit](#)



4.

 Funkce je spojitá na $(-\infty, 0) \cup (0, \infty)$.

 The function is continuous on the set $(-\infty, 0) \cup (0, \infty)$.

Ano, tvrzení platí.

Yes, it's true.

Ne, tvrzení neplatí.

No, it's not true.

[Prev. Page](#)

[Next Page](#)

[Home Page](#)

[Print](#)

[Title Page](#)



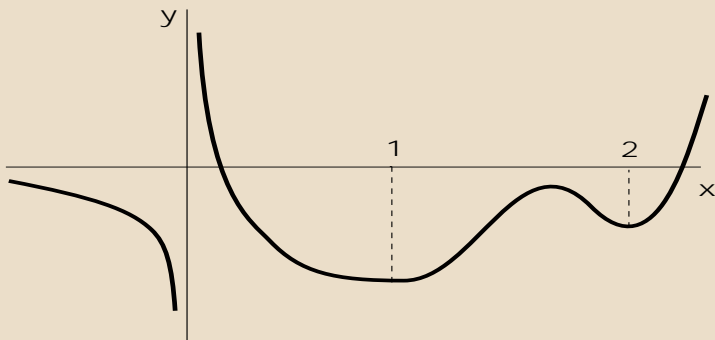
Page 6 of 58

[Go Back](#)

[Full Screen](#)


[Close](#)

[Quit](#)



5.

 Funkce je shora ohraničená.

 The function is bounded above.

Ano, tvrzení platí.
Yes, it's true.

Ne, tvrzení neplatí.
No, it's not true.

[Prev. Page](#)

[Next Page](#)

[Home Page](#)

[Print](#)

[Title Page](#)



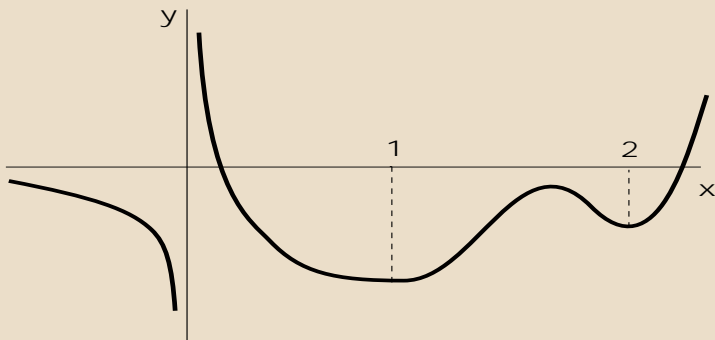
Page 7 of 58

[Go Back](#)


[Full Screen](#)


[Close](#)

[Quit](#)



6.

 Funkce je na intervalu $(1, \infty)$ zdola ohraničená.

 The function is bounded bellow on $(1, \infty)$.

Ano, tvrzení platí.

Yes, it's true.

Ne, tvrzení neplatí.

No, it's not true.

[Prev. Page](#)

[Next Page](#)

[Home Page](#)

[Print](#)

[Title Page](#)



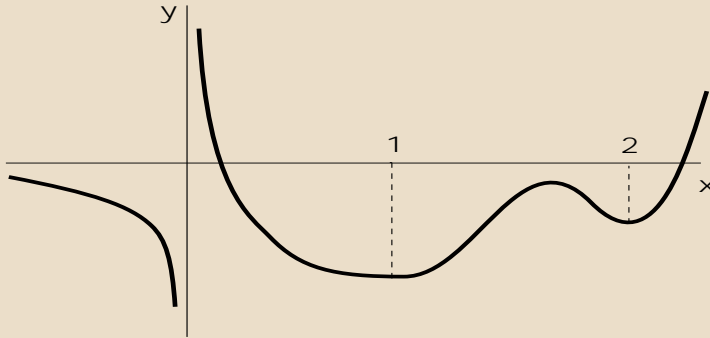
Page 8 of 58

[Go Back](#)

[Full Screen](#)

[Close](#)

[Quit](#)



7.

 Funkce je klesající na $(-\infty, 1)$.

 The function is decreasing on $(-\infty, 1)$.

Ano, tvrzení platí.
Yes, it's true.

Ne, tvrzení neplatí.
No, it's not true.

[Prev. Page](#)

[Next Page](#)

[Home Page](#)

[Print](#)

[Title Page](#)



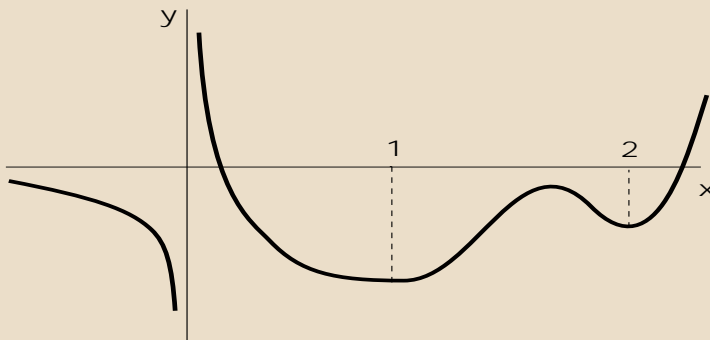
Page 9 of 58

[Go Back](#)

[Full Screen](#)

[Close](#)

[Quit](#)



8.

Funkce je rostoucí na intervalu $(1, 2)$.

The function is increasing on $(1, 2)$.

Ano, tvrzení platí.

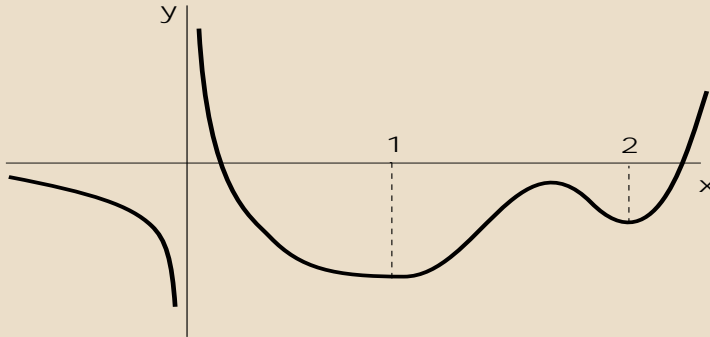
Yes, it's true.

Ne, tvrzení neplatí.


No, it's not true.

Prev. Page

Next Page



9.

 Funkce je spojitá a rostoucí na $(0, \infty)$.

 The function is continuous and increasing on $(0, \infty)$.

Ano, tvrzení platí.

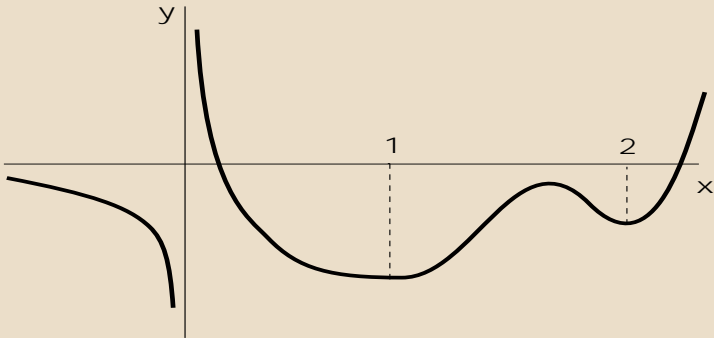
Yes, it's true.

Ne, tvrzení neplatí.


No, it's not true.


Prev. Page

Next Page



10.

 Funkce je klesající na intervalu $(0, 1)$.

 The function is decreasing on $(0, 1)$.

Ano, tvrzení platí.
Yes, it's true.

Ne, tvrzení neplatí.
No, it's not true.

[Prev. Page](#)

[Next Page](#)

[Home Page](#)

[Print](#)

[Title Page](#)

[⏪](#) [⏩](#)

[⏴](#) [⏵](#)

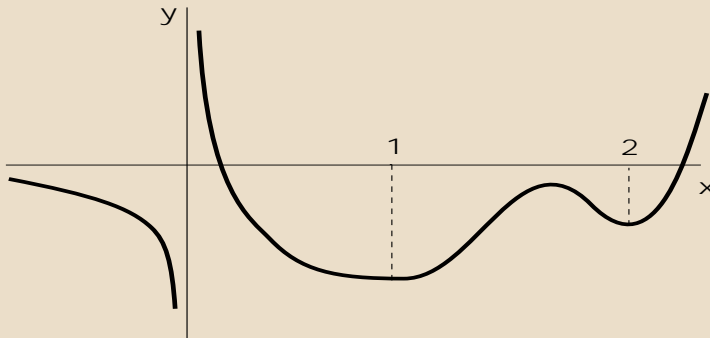
Page 12 of 58

[Go Back](#)

[Full Screen](#)

[Close](#)

[Quit](#)



11.

Funkce má tři lokální minima.

The function possesses three local minima.

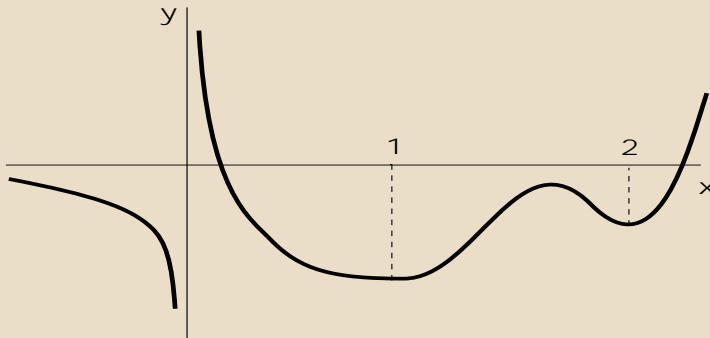
Ano, tvrzení platí.

Yes, it's true.


Ne, tvrzení neplatí.

No, it's not true.

[Prev. Page](#)
[Next Page](#)



12.

 Funkce má jedno lokální maximum.

 The function possesses one local maximum.

Ano, tvrzení platí.

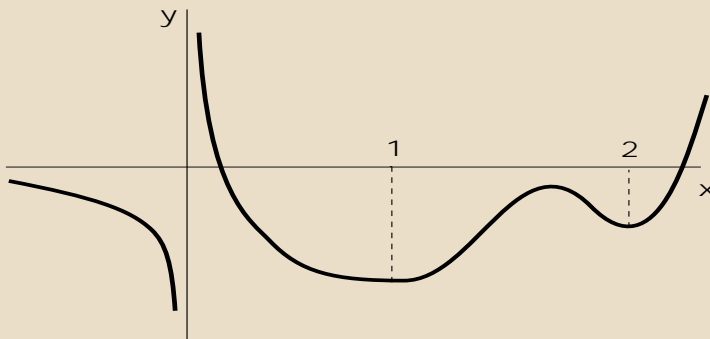
Yes, it's true.

Ne, tvrzení neplatí.


No, it's not true.

Prev. Page

Next Page



13.

 Funkce nemá žádný inflexní bod.

 The function possesses no point of inflection.

Ano, tvrzení platí.

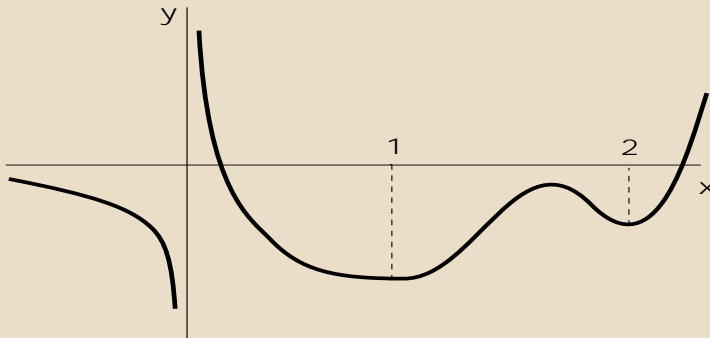
Yes, it's true.

Ne, tvrzení neplatí.


No, it's not true.


Prev. Page

Next Page



14.

 Funkce má na intervalu $(1,2)$ dva inflexní body.

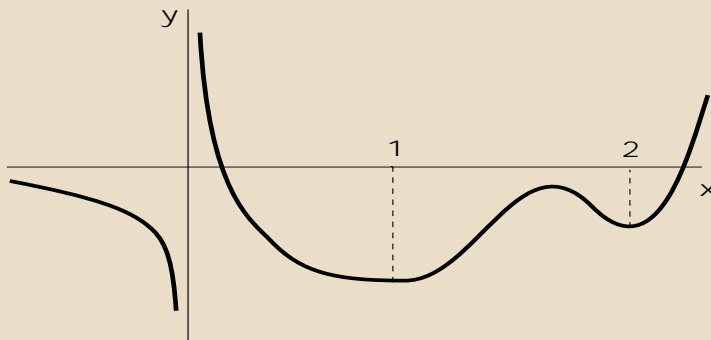
 The function possesses two point of inflection on the interval $(1,2)$.

Ano, tvrzení platí.
Yes, it's true.

Ne, tvrzení neplatí.
No, it's not true.

Prev. Page

Next Page



15.

Funkce má na intervalu $(0, 1)$ jeden inflexní bod.

The function possesses one point of inflection on $(0, 1)$.

Ano, tvrzení platí.

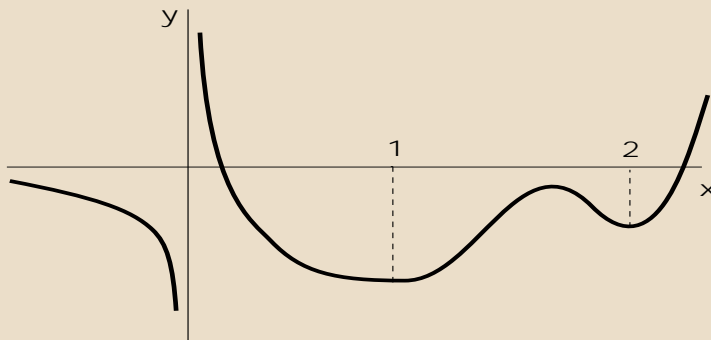
Yes, it's true.

Ne, tvrzení neplatí.

No, it's not true.

Prev. Page

Next Page



16.

🇨🇪 Funkce je konkávní na intervalu $(-\infty, 0)$.

🇬🇧 The function is concave up on $(-\infty, 0)$.

Ano, tvrzení platí.

Yes, it's true.

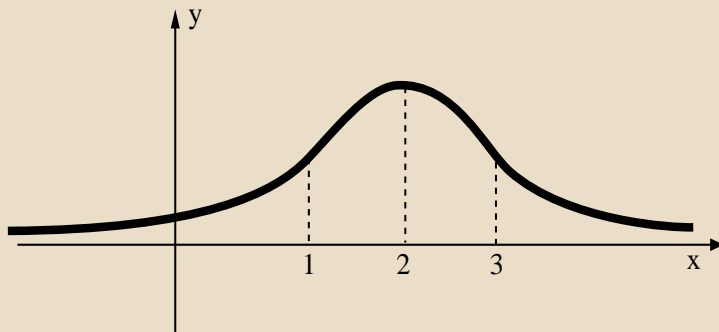
Ne, tvrzení neplatí.

No, it's not true.

Prev. Page


Next Page

Quiz



1.

 Funkce je definovaná na \mathbb{R} .

 The function is defined on \mathbb{R} .

Ano, tvrzení platí.

Yes, it's true.

Ne, tvrzení neplatí.

No, it's not true.

[Prev. Page](#)

[Next Page](#)



[Home Page](#)

[Print](#)

[Title Page](#)



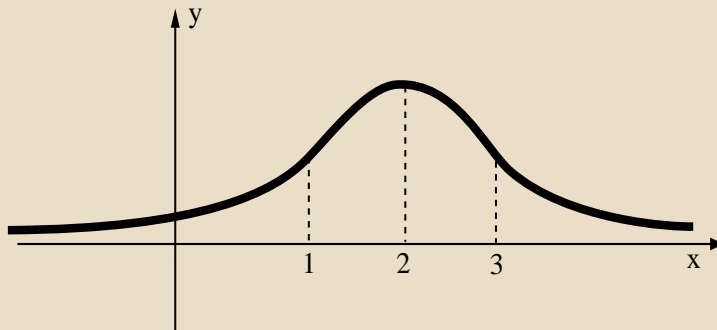
Page 19 of 58

[Go Back](#)


[Full Screen](#)

[Close](#)

[Quit](#)



2.

 Funkce má jeden bod nespojitosti.

 There is one point of discontinuity of the function.

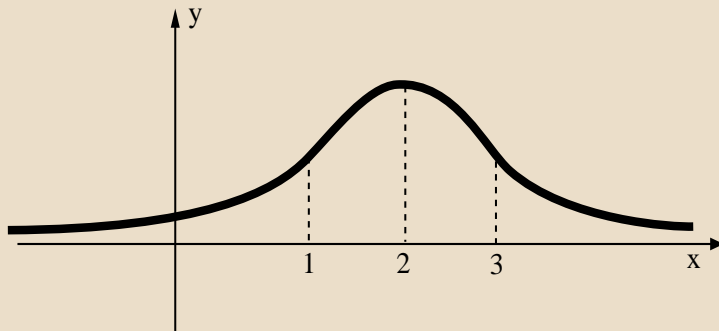
Ano, tvrzení platí.

Yes, it's true.


Ne, tvrzení neplatí.


No, it's not true.

[Prev. Page](#)[Next Page](#)



3.

 Funkce není prostá na \mathbb{R} .

 The function is not one-to-one on \mathbb{R} .

Ano, tvrzení platí.
Yes, it's true.

Ne, tvrzení neplatí.
No, it's not true.

[Prev. Page](#)

[Next Page](#)

[Home Page](#)

[Print](#)

[Title Page](#)



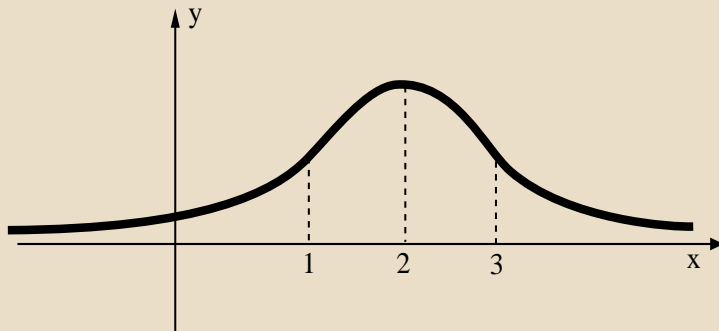
Page 21 of 58

[Go Back](#)


[Full Screen](#)

[Close](#)

[Quit](#)



4.

 Na intervalu $(2, \infty)$ je funkce prostá a klesající.

 The function is one-to-one and decreasing on $(2, \infty)$.

Ano, tvrzení platí.

Yes, it's true.

Ne, tvrzení neplatí.

No, it's not true.

[Prev. Page](#)

[Next Page](#)

[Home Page](#)

[Print](#)

[Title Page](#)



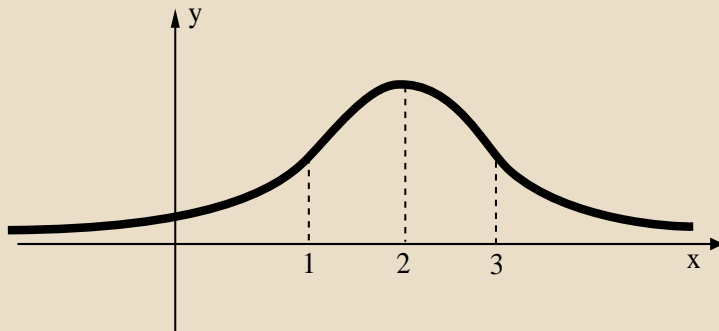
Page 22 of 58

[Go Back](#)

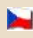
[Full Screen](#)

[Close](#)

[Quit](#)



5.

 Funkce je spojitá na \mathbb{R} .

 The function is continuous on \mathbb{R} .

Ano, tvrzení platí.
Yes, it's true.

Ne, tvrzení neplatí.
No, it's not true.

[Prev. Page](#)

[Next Page](#)

[Home Page](#)

[Print](#)

[Title Page](#)



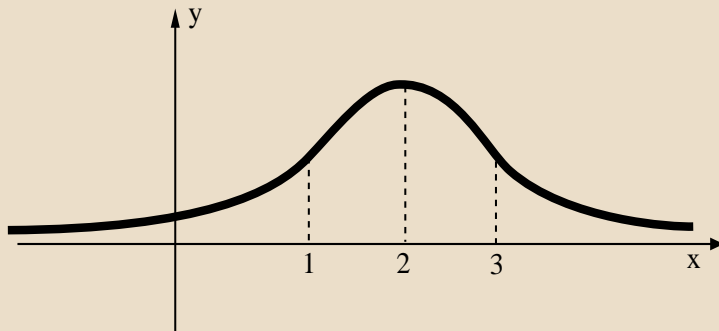
Page 23 of 58

[Go Back](#)


[Full Screen](#)

[Close](#)

[Quit](#)



6.

 Funkce má tři lokální extrémy.

 The function possesses three local extrema.

Ano, tvrzení platí.
Yes, it's true.

Ne, tvrzení neplatí.
No, it's not true.

[Prev. Page](#)

[Next Page](#)

[Home Page](#)

[Print](#)

[Title Page](#)



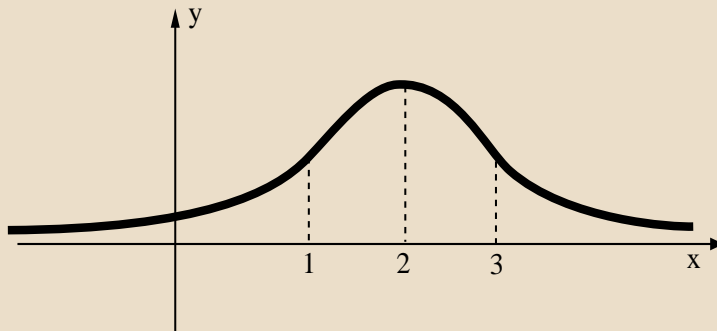
Page 24 of 58

[Go Back](#)

[Full Screen](#)


[Close](#)

[Quit](#)



7.

 Funkce má jeden lokální extrém.

 The function possesses a unique local extremum.

Ano, tvrzení platí.
Yes, it's true.

Ne, tvrzení neplatí.
No, it's not true.

[Prev. Page](#)

[Next Page](#)

[Home Page](#)

[Print](#)

[Title Page](#)



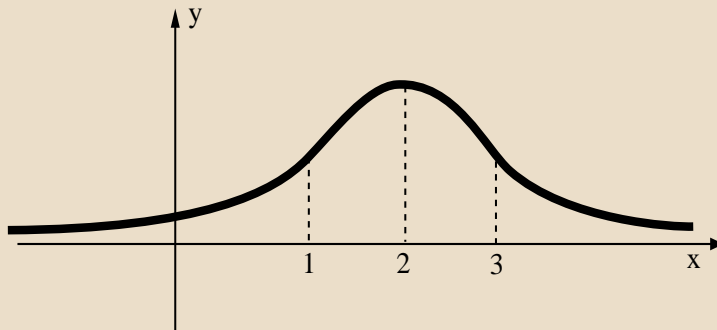
Page 25 of 58

[Go Back](#)

[Full Screen](#)

[Close](#)

[Quit](#)



8.

🇨🇪 Funkce má dva inflexní body.

🇬🇧 The function possesses two points of inflection.

Ano, tvrzení platí.

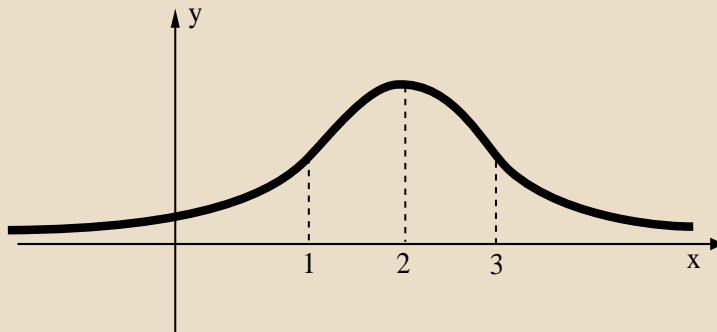
Yes, it's true.

Ne, tvrzení neplatí.

No, it's not true.


Prev. Page

Next Page



9.

 Funkce má tři inflexní body.

 The function possesses three points of inflection.

Ano, tvrzení platí.
Yes, it's true.

Ne, tvrzení neplatí.
No, it's not true.

[Prev. Page](#)

[Next Page](#)

[Home Page](#)

[Print](#)

[Title Page](#)



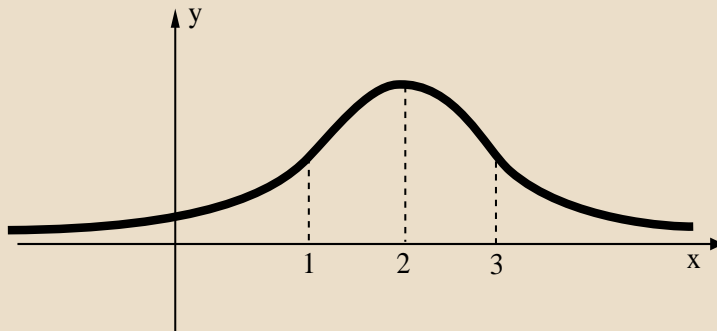
Page 27 of 58

[Go Back](#)


[Full Screen](#)


[Close](#)

[Quit](#)



10.

 Na intervalu $(0, 2)$ je funkce rostoucí.

 The function is increasing on $(0, 2)$.

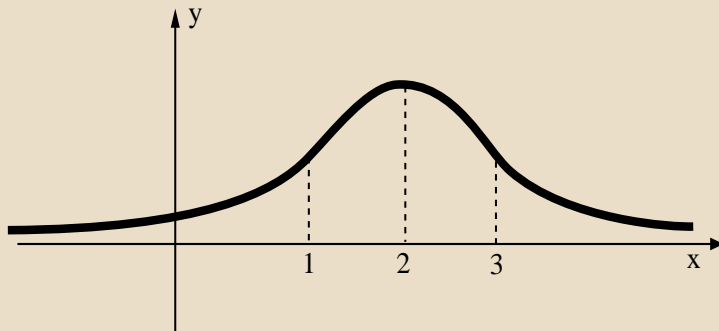
Ano, tvrzení platí.

Yes, it's true.


Ne, tvrzení neplatí.

No, it's not true.

[Prev. Page](#)[Next Page](#)



11.

 Na intervalu $(0, 2)$ je funkce konvexní.

 The function is concave up on $(0, 2)$.

Ano, tvrzení platí.
Yes, it's true.

Ne, tvrzení neplatí.
No, it's not true.

[Prev. Page](#)

[Next Page](#)

[Home Page](#)

[Print](#)

[Title Page](#)



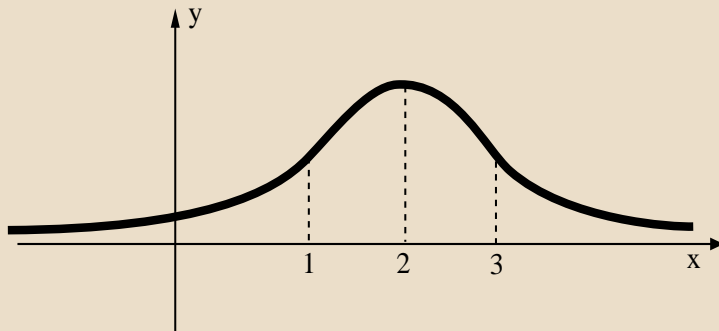
Page 29 of 58

[Go Back](#)


[Full Screen](#)


[Close](#)

[Quit](#)



12.

 Na intervalu $(0, 2)$ funkce nemá lokální extrém.

 The function possesses no local extremum on $(0, 2)$.

Ano, tvrzení platí.
Yes, it's true.

Ne, tvrzení neplatí.
No, it's not true.

[Prev. Page](#)

[Next Page](#)

[Home Page](#)

[Print](#)

[Title Page](#)



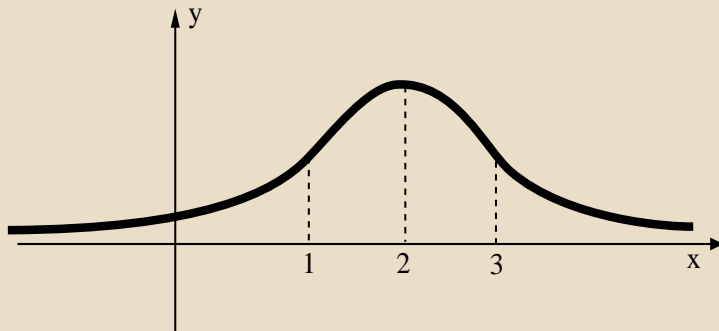
Page 30 of 58

[Go Back](#)


[Full Screen](#)


[Close](#)

[Quit](#)



13.

 Na intervalu $(0, 2)$ funkce nemá inflexní bod.

 The function possesses no point of inflection on $(0, 2)$.

Ano, tvrzení platí.

Yes, it's true.

Ne, tvrzení neplatí.

No, it's not true.

[Prev. Page](#)

[Next Page](#)

[Home Page](#)

[Print](#)

[Title Page](#)



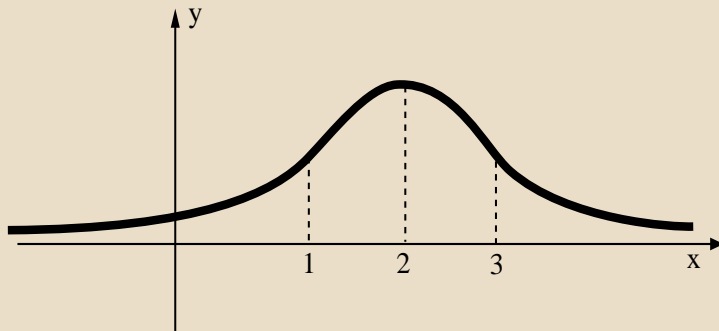
Page 31 of 58

[Go Back](#)

[Full Screen](#)

[Close](#)

[Quit](#)



14.

🇨🇪 Na intervalu $(1,3)$ funkce nemá inflexní bod.

🇬🇧 The function possesses no point of inflection on $(1,3)$.

Ano, tvrzení platí.
Yes, it's true.

Ne, tvrzení neplatí.
No, it's not true.

Prev. Page

Next Page

Home Page

Print

Title Page



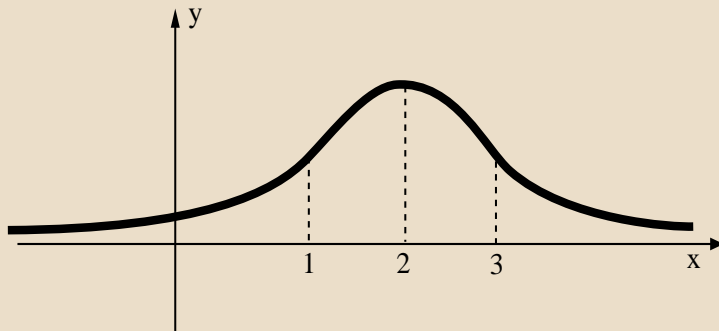
Page 32 of 58

Go Back


Full Screen


Close

Quit



15.

 Platí $\lim_{x \rightarrow -\infty} f(x) = 0$.

 $\lim_{x \rightarrow -\infty} f(x) = 0$ holds.

Ano, tvrzení platí.
Yes, it's true.

Ne, tvrzení neplatí.
No, it's not true.

[Prev. Page](#)

[Next Page](#)

[Home Page](#)

[Print](#)

[Title Page](#)

[◀](#) [▶](#)

[◀](#) [▶](#)

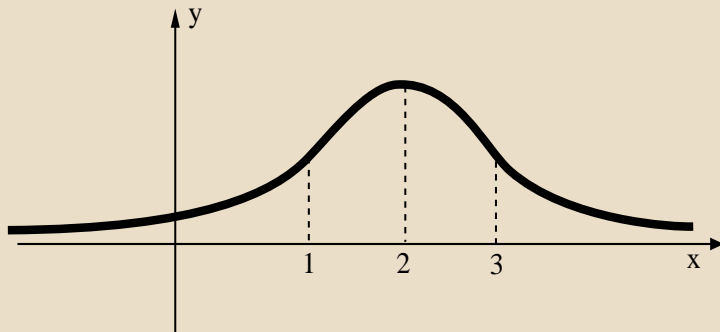
Page 33 of 58

[Go Back](#)


[Full Screen](#)


[Close](#)

[Quit](#)



16.

 Platí $\lim_{x \rightarrow 2} f(x) = +\infty$.

 $\lim_{x \rightarrow 2} f(x) = +\infty$ holds.

Ano, tvrzení platí.
Yes, it's true.

Ne, tvrzení neplatí.
No, it's not true.

[Prev. Page](#)

[Next Page](#)

[Home Page](#)

[Print](#)

[Title Page](#)



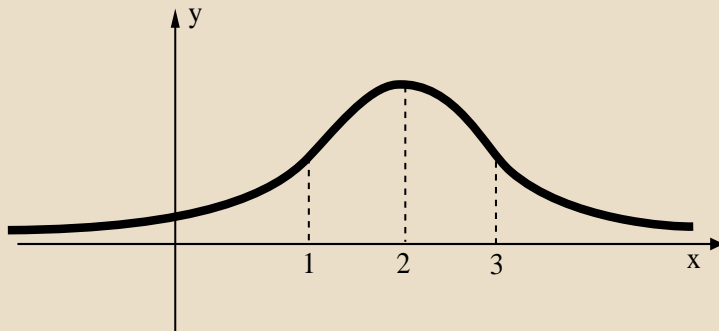
Page 34 of 58

[Go Back](#)

[Full Screen](#)

[Close](#)

[Quit](#)



17.

🇨🇪 Funkce má hrot v bodě $x = 2$ a nemá zde derivaci.

🇬🇧 The derivative at $x = 2$ is undefined.

Ano, tvrzení platí.
Yes, it's true.

Ne, tvrzení neplatí.
No, it's not true.

[Prev. Page](#)

[Next Page](#)

[Home Page](#)

[Print](#)

[Title Page](#)



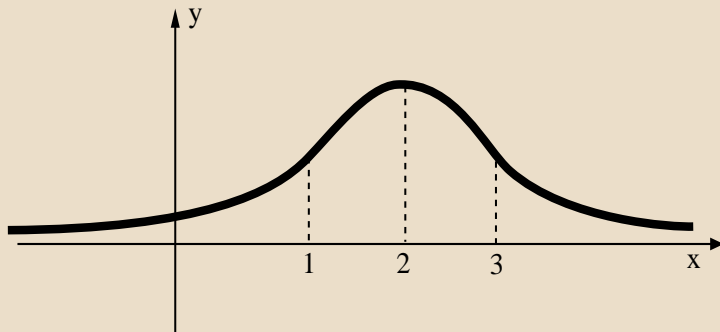
Page 35 of 58

[Go Back](#)

[Full Screen](#)

[Close](#)

[Quit](#)



18.

 Funkce je sudá.

 The function is odd.

Ano, tvrzení platí.
Yes, it's true.

Ne, tvrzení neplatí.
No, it's not true.

[Prev. Page](#)

[Next Page](#)

[Home Page](#)

[Print](#)

[Title Page](#)



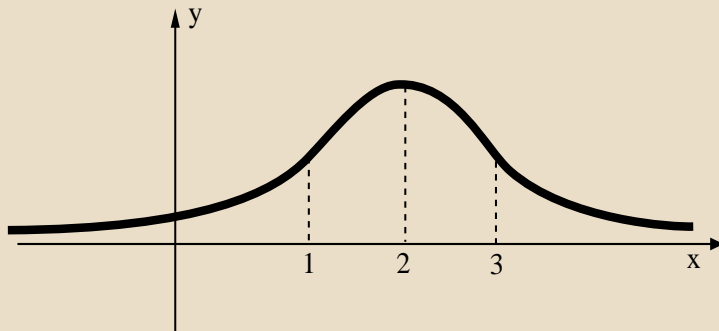
Page 36 of 58

[Go Back](#)

[Full Screen](#)

[Close](#)

[Quit](#)



19.

 Funkce je lichá.

 The function is even.

Ano, tvrzení platí.
Yes, it's true.

Ne, tvrzení neplatí.
No, it's not true.

[Prev. Page](#)

[Next Page](#)

[Home Page](#)

[Print](#)

[Title Page](#)



Page 37 of 58

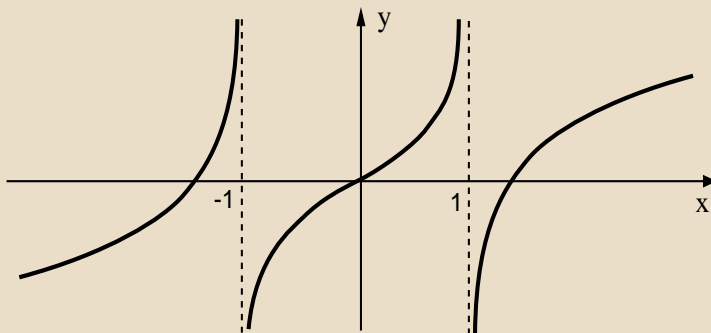
[Go Back](#)

[Full Screen](#)

[Close](#)

[Quit](#)

Quiz



1.

 Funkce je definovaná na \mathbb{R} .

 The function is well-defined on \mathbb{R} .

Ano, tvrzení platí.
Yes, it's true.

Ne, tvrzení neplatí.
No, it's not true.

[Prev. Page](#)

[Next Page](#)



[Home Page](#)

[Print](#)

[Title Page](#)



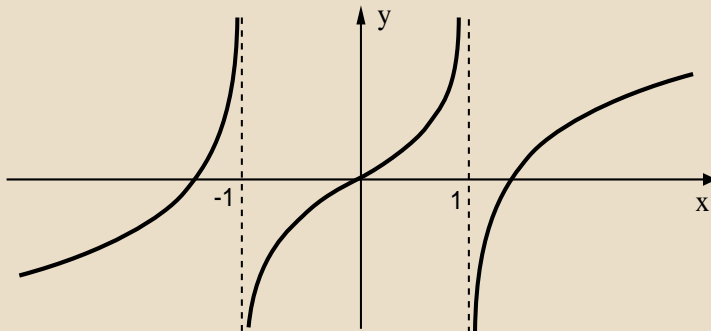
Page 38 of 58

[Go Back](#)

[Full Screen](#)


[Close](#)

[Quit](#)



2.

 Funkce má jeden bod nespojitosti.

 The function possesses one point of discontinuity.

Ano, tvrzení platí.
Yes, it's true.

Ne, tvrzení neplatí.
No, it's not true.

[Prev. Page](#)

[Next Page](#)



[Home Page](#)

[Print](#)

[Title Page](#)



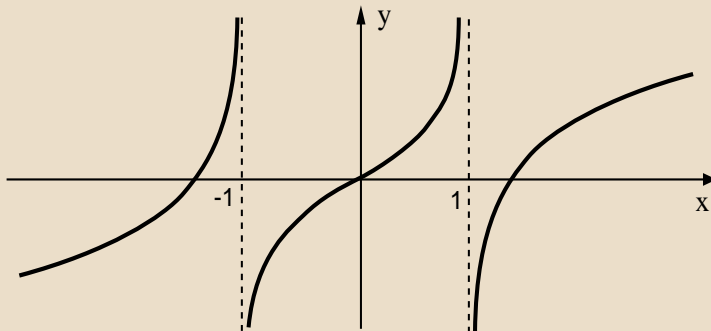
Page 39 of 58

[Go Back](#)


[Full Screen](#)

[Close](#)

[Quit](#)



3.

 Funkce má dva body nespojitosti.

 The function possesses two points of discontinuity.

Ano, tvrzení platí.

Yes, it's true.

Ne, tvrzení neplatí.

No, it's not true.

[Prev. Page](#)

[Next Page](#)

[Home Page](#)

[Print](#)

[Title Page](#)



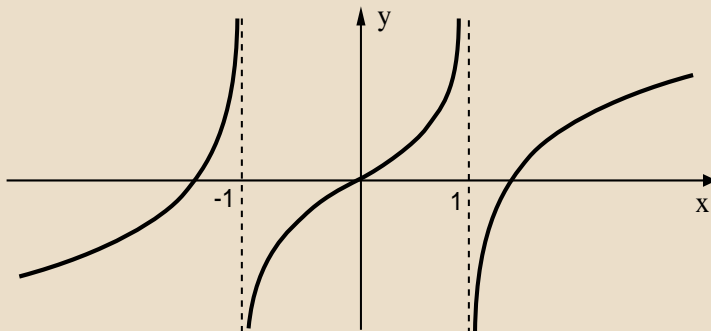
Page 40 of 58

[Go Back](#)

[Full Screen](#)

[Close](#)

[Quit](#)



4.

 Funkce je sudá.

 The function is even.

Ano, tvrzení platí.
Yes, it's true.

Ne, tvrzení neplatí.
No, it's not true.

[Prev. Page](#)

[Next Page](#)

[Home Page](#)

[Print](#)

[Title Page](#)



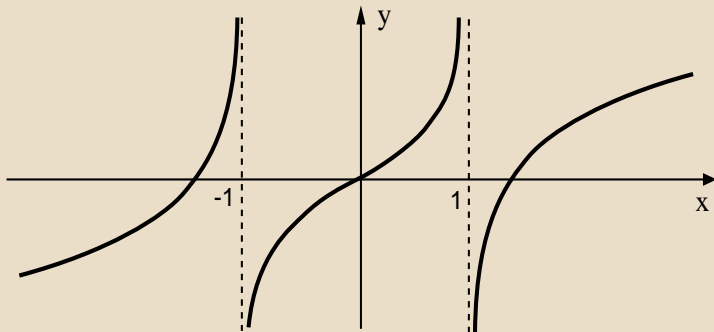
Page 41 of 58

[Go Back](#)

[Full Screen](#)

[Close](#)

[Quit](#)



5.



Funkce je lichá.



The function is odd.

Ano, tvrzení platí.

Yes, it's true.

Ne, tvrzení neplatí.

No, it's not true.

Prev. Page

Next Page



Home Page

Print

Title Page



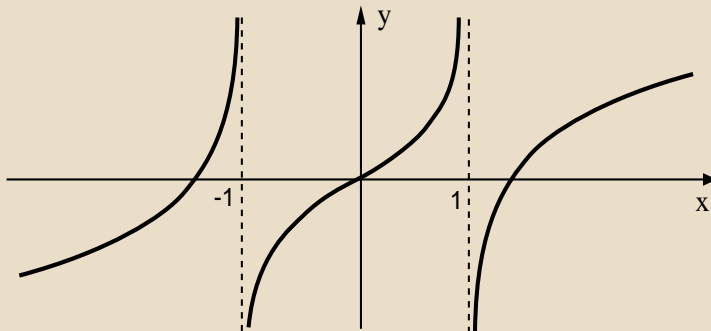
Page 42 of 58

Go Back

Full Screen

Close

Quit



6.

 Funkce má čtyři lokální extrémy.

 The function possesses four local extrema.

Ano, tvrzení platí.
Yes, it's true.

Ne, tvrzení neplatí.
No, it's not true.

[Prev. Page](#)

[Next Page](#)

[Home Page](#)

[Print](#)

[Title Page](#)



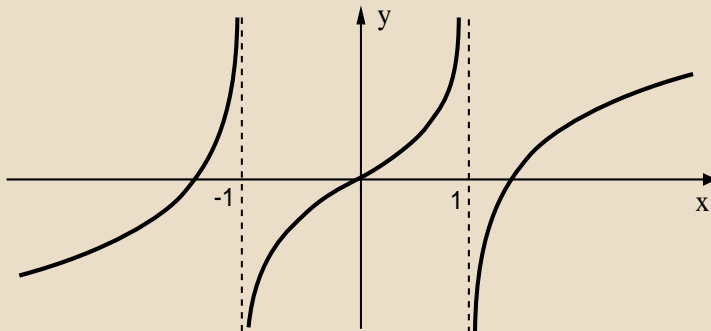
Page 43 of 58

[Go Back](#)

[Full Screen](#)

[Close](#)

[Quit](#)



7.

 Funkce má dva lokální extrémy.

 The function possesses two local extrema.

Ano, tvrzení platí.
Yes, it's true.

Ne, tvrzení neplatí.
No, it's not true.

[Prev. Page](#)

[Next Page](#)

[Home Page](#)

[Print](#)

[Title Page](#)



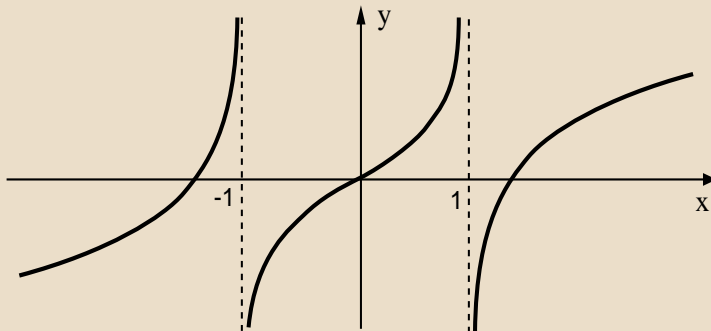
Page 44 of 58

[Go Back](#)


[Full Screen](#)

[Close](#)

[Quit](#)



8.

 Funkce nemá žádný lokální extrém.

 The function possesses no local extremum.

Ano, tvrzení platí.
Yes, it's true.

Ne, tvrzení neplatí.
No, it's not true.

[Prev. Page](#)

[Next Page](#)

[Home Page](#)

[Print](#)

[Title Page](#)



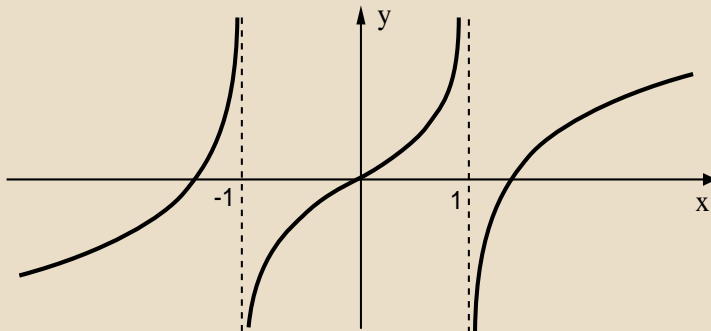
Page 45 of 58

[Go Back](#)

[Full Screen](#)

[Close](#)

[Quit](#)



9.

 Funkce má jeden inflexní bod.

 The function possesses one point of inflection.

Ano, tvrzení platí.

Yes, it's true.

Ne, tvrzení neplatí.

No, it's not true.

[Prev. Page](#)

[Next Page](#)

[Home Page](#)

[Print](#)

[Title Page](#)



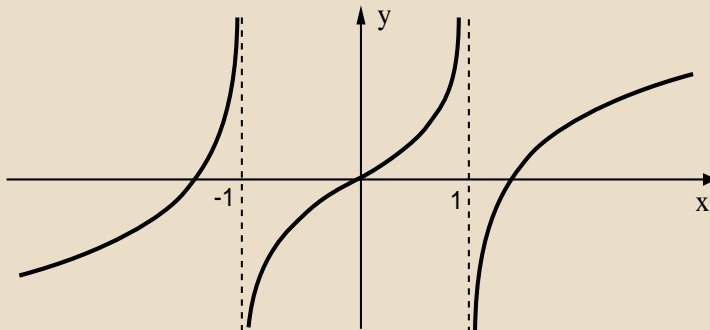
Page 46 of 58

[Go Back](#)

[Full Screen](#)

[Close](#)

[Quit](#)



10.

Funkce má tři inflexní body.

The function possesses three points of inflection.

Ano, tvrzení platí.

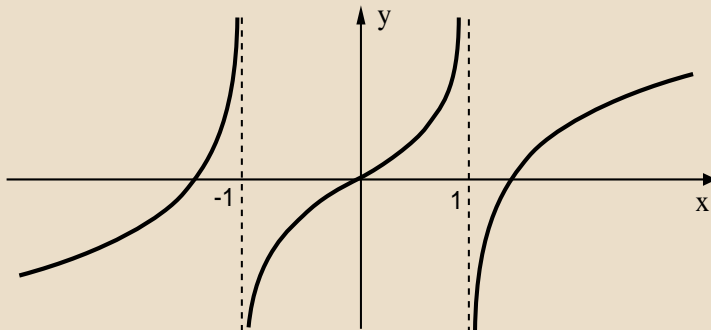
Yes, it's true.

Ne, tvrzení neplatí.


No, it's not true.


Prev. Page

Next Page



11.

 Na intervalu $(-1, 1)$ je funkce rostoucí.

 The function is increasing on $(-1, 1)$.

Ano, tvrzení platí.
Yes, it's true.

Ne, tvrzení neplatí.
No, it's not true.

[Prev. Page](#)

[Next Page](#)

[Home Page](#)

[Print](#)

[Title Page](#)



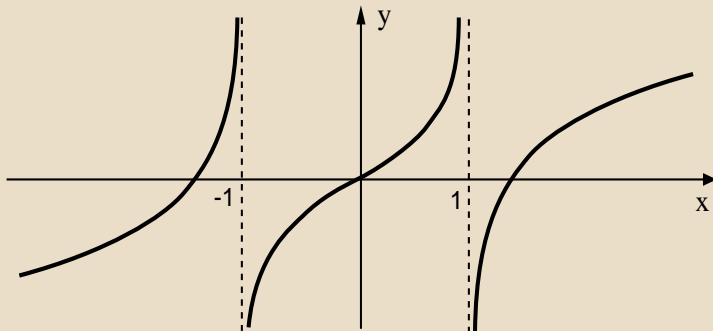
Page 48 of 58

[Go Back](#)


[Full Screen](#)


[Close](#)

[Quit](#)



12.

 Na intervalu $(1, \infty)$ je funkce rostoucí.

 The function is increasing on $(1, \infty)$.

Ano, tvrzení platí.
Yes, it's true.

Ne, tvrzení neplatí.
No, it's not true.

[Prev. Page](#)

[Next Page](#)

[Home Page](#)

[Print](#)

[Title Page](#)



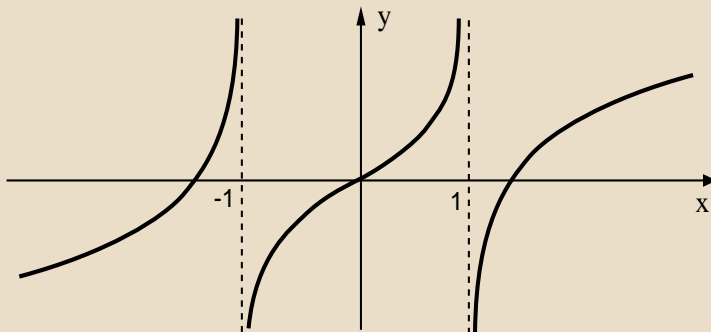
Page 49 of 58

[Go Back](#)

[Full Screen](#)

[Close](#)

[Quit](#)



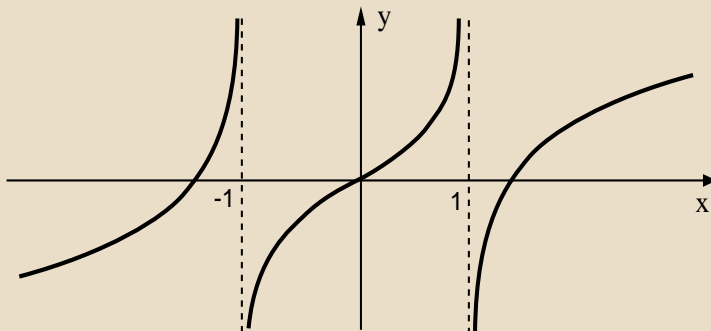
13.

🇨🇪 Na intervalech $(-\infty, -1)$ a $(0, 1)$ je funkce konvexní, na intervalech $(-1, 0)$ a $(1, \infty)$ je konkávní.


🇬🇧 The function is concave up on the intervals $(-\infty, -1)$ and $(0, 1)$ and it is concave down on the intervals $(-1, 0)$ and $(1, \infty)$.

Ano, tvrzení platí.
Yes, it's true.

Ne, tvrzení neplatí.
No, it's not true.



14.

 Na intervalu $(-1, 1)$ je funkce prostá.

 The function is one-to-one on $(-1, 1)$.

Ano, tvrzení platí.

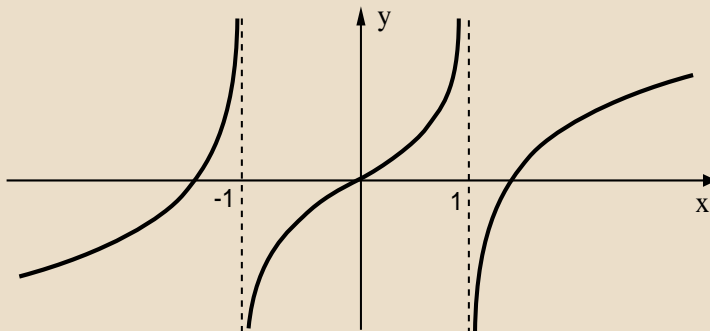
Yes, it's true.

Ne, tvrzení neplatí.

No, it's not true.

Prev. Page

Next Page



15.

🇨🇪 Oborem hodnot funkce jsou všechna kladná reálná čísla.

🇬🇧 Image of the function is \mathbb{R} .

Ano, tvrzení platí.

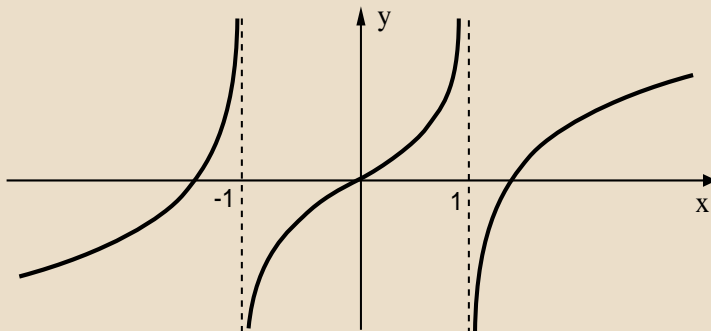
Yes, it's true.

Ne, tvrzení neplatí.


No, it's not true.

Prev. Page

Next Page



16.

 Funkce nemá limitu v bodě $x = 1$.

 The function possesses no limit at $x = 1$.

Ano, tvrzení platí.
Yes, it's true.

Ne, tvrzení neplatí.
No, it's not true.

Prev. Page

Next Page

Home Page

Print

Title Page



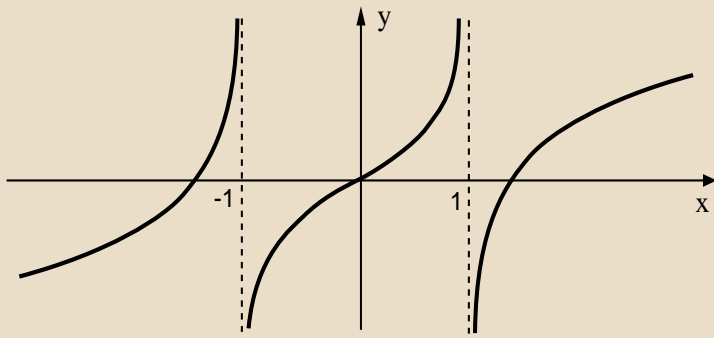
Page 53 of 58

Go Back


Full Screen


Close

Quit



17.

 Platí $\lim_{x \rightarrow 1^+} f(x) = 0$.

 $\lim_{x \rightarrow 1^+} f(x) = 0$ holds.

Ano, tvrzení platí.
Yes, it's true.

Ne, tvrzení neplatí.
No, it's not true.

[Prev. Page](#)

[Next Page](#)

[Home Page](#)

[Print](#)

[Title Page](#)

[⏪](#) [⏩](#)

[⏴](#) [⏵](#)

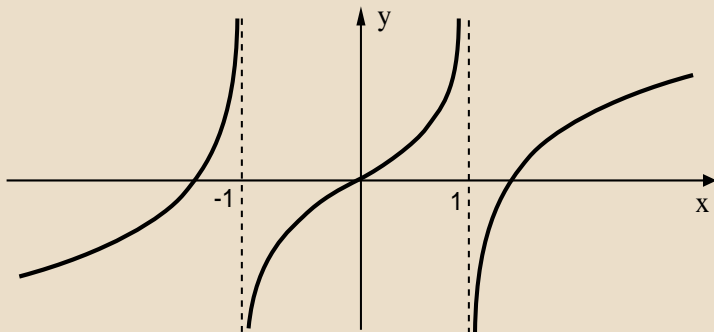
Page 54 of 58

[Go Back](#)


[Full Screen](#)


[Close](#)

[Quit](#)



18.

 Platí $\lim_{x \rightarrow -1^-} f(x) = +\infty$.

 $\lim_{x \rightarrow -1^-} f(x) = +\infty$ holds.

Ano, tvrzení platí.
Yes, it's true.

Ne, tvrzení neplatí.
No, it's not true.

Prev. Page

Next Page

Home Page

Print

Title Page



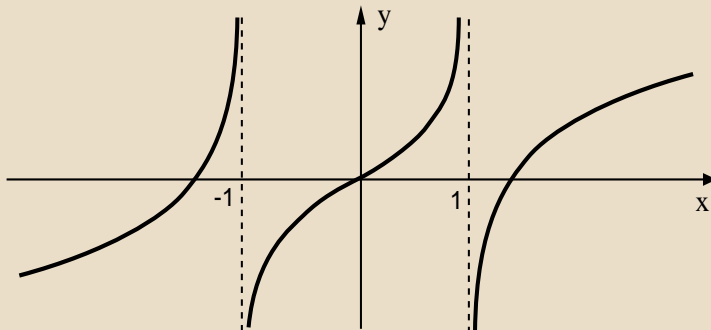
Page 55 of 58

Go Back


Full Screen


Close

Quit



19.

 Funkce nemá stacionární bod.

 The function possesses no stationary point (a point with vanishing derivative).

Ano, tvrzení platí.
Yes, it's true.

Ne, tvrzení neplatí.
No, it's not true.

[Prev. Page](#)

[Next Page](#)

[Home Page](#)

[Print](#)

[Title Page](#)



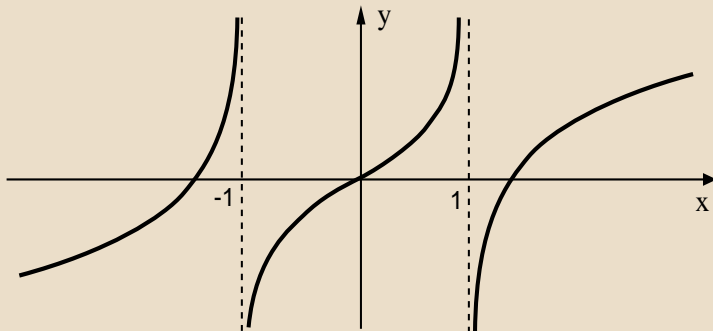
Page 56 of 58

[Go Back](#)


[Full Screen](#)

[Close](#)

[Quit](#)



20.

 Funkce je na intervalu $(0, 1)$ zdola ohraničená.

 The function is bounded bellow on $(0, 1)$.

Ano, tvrzení platí.

Yes, it's true.

Ne, tvrzení neplatí.

No, it's not true.

[Prev. Page](#)

[Next Page](#)

[Home Page](#)

[Print](#)

[Title Page](#)



Page 57 of 58

[Go Back](#)

[Full Screen](#)

[Close](#)

[Quit](#)

That's all. The user is kindly asked to send his comments to these quizzes to my E-mail address: marik@mendelu.cz.



[Home Page](#)

[Print](#)

[Title Page](#)



Page **58** of **58**

[Go Back](#)

[Full Screen](#)

[Close](#)

[Quit](#)